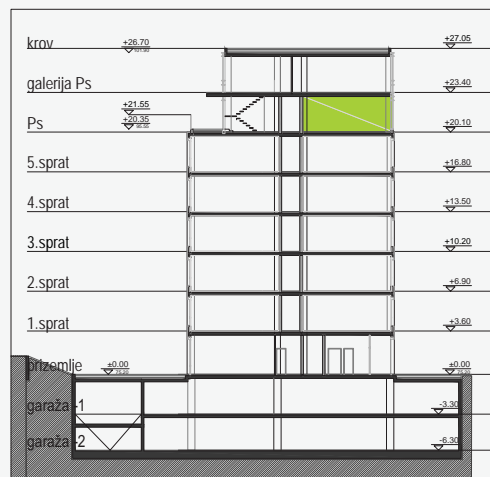
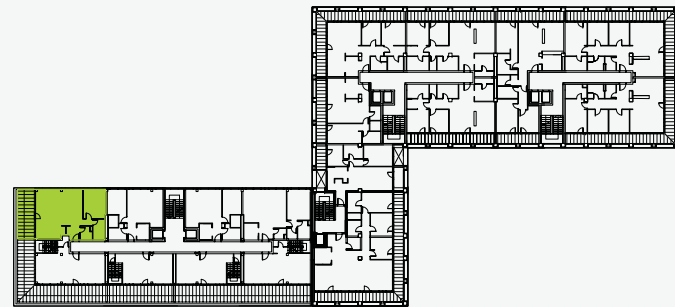




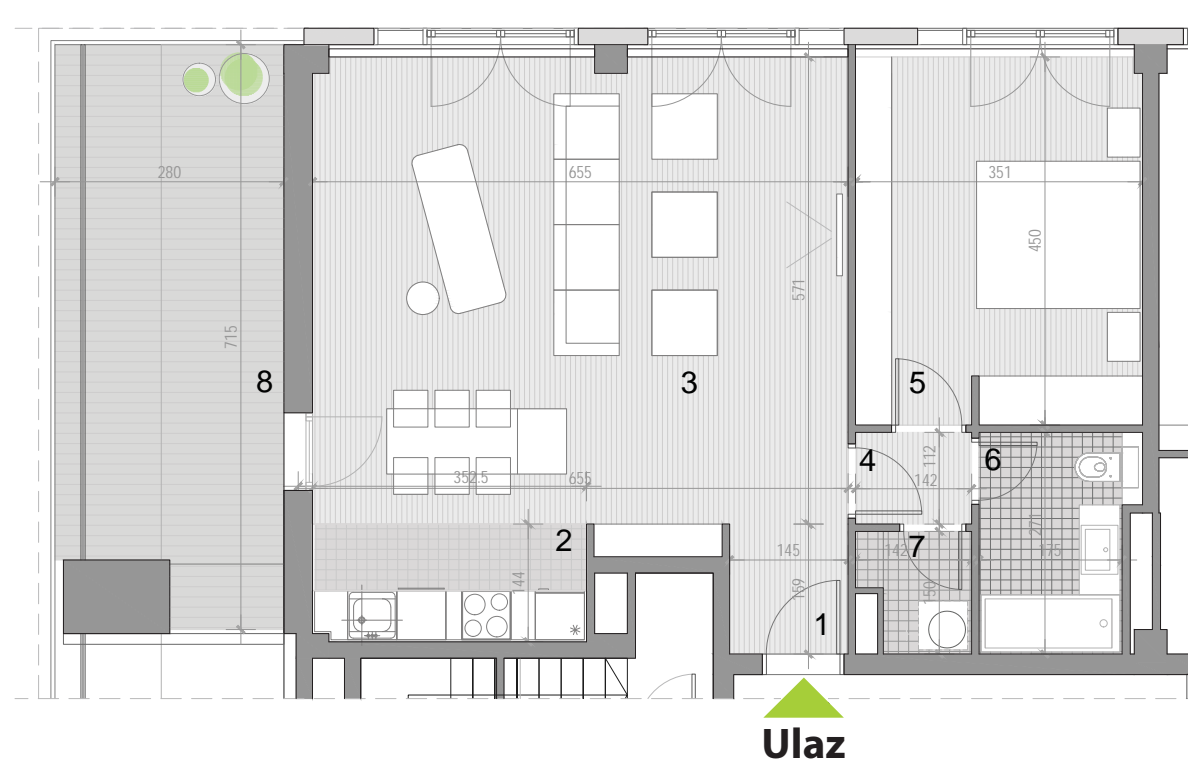
DVOSOBAN STAN

89,30m²

Ulaz G - stan: 42



* katalog je informativnog karaktera



| R. br. | Prostorije | m ² |
|--------|-------------------------------|----------------|
| 1. | Ulazni deo | 2.31 |
| 2. | Kuhinja | 4.81 |
| 3. | Dnevni boravak sa trpezarijom | 38.80 |
| 4. | Hodnik | 1.59 |
| 5. | Spavaća soba | 16.23 |
| 6. | Kupatilo | 4.74 |
| 7. | Vešernica | 1.85 |
| 8. | Terasa | 18.97 |
| UKUPNO | | 89.30 |