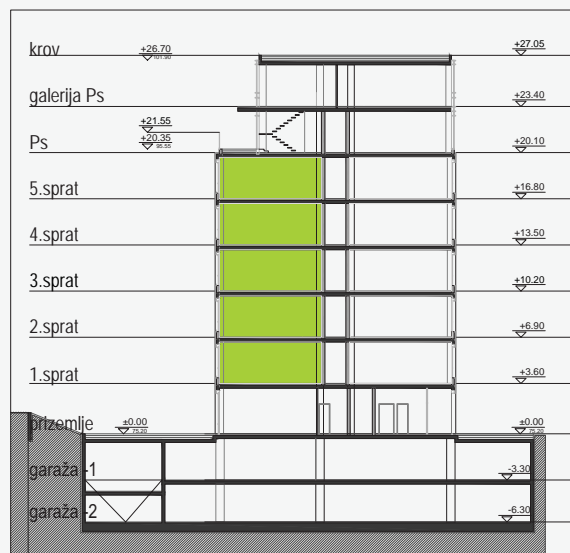




DVOSOBAN STAN

67,37m²

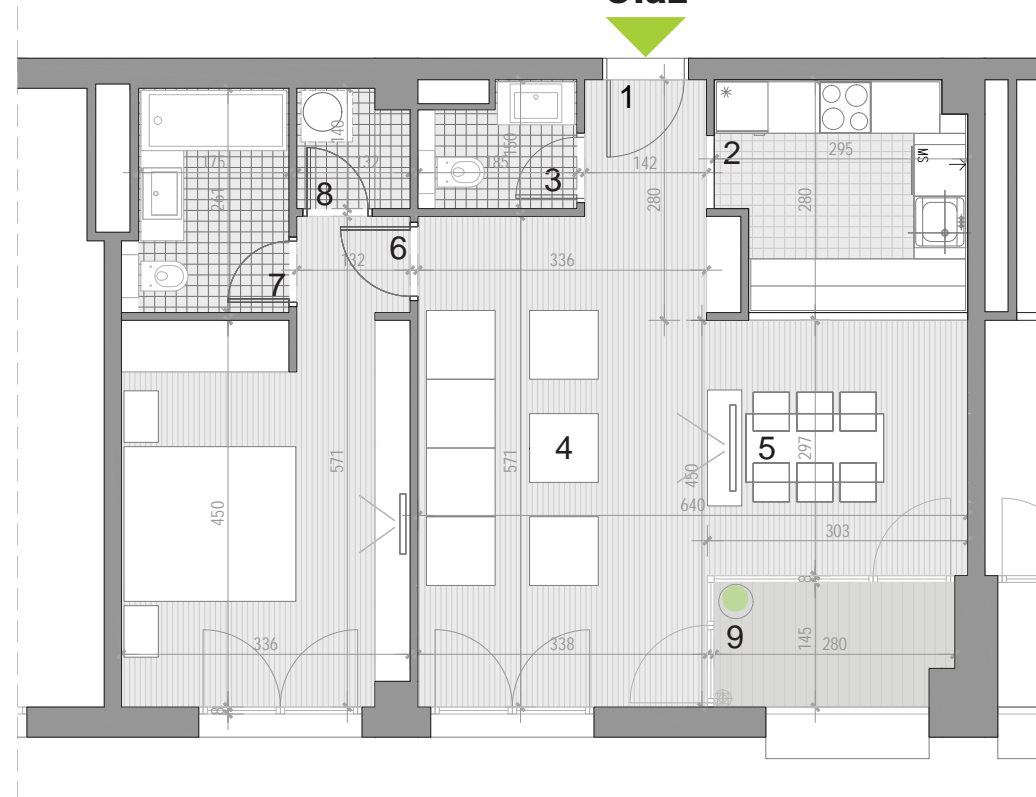
Ulaz G - stanovi: 5, 13, 21, 29, 37



* katalog je informativnog karaktera



Ulaz



| R. br. | Prostorije | m ² |
|---------------|----------------|----------------|
| 1. | Ulazni deo | 2.26 |
| 2. | Kuhinja | 7.46 |
| 3. | Toalet | 2.23 |
| 4. | Dnevni boravak | 19.68 |
| 5. | Trpezarija | 9.00 |
| 6. | Spavaća soba | 16.50 |
| 7. | Kupatilo | 4.57 |
| 8. | Vešernica | 1.75 |
| 9. | Lođa | 3.92 |
| UKUPNO | | 67.37 |