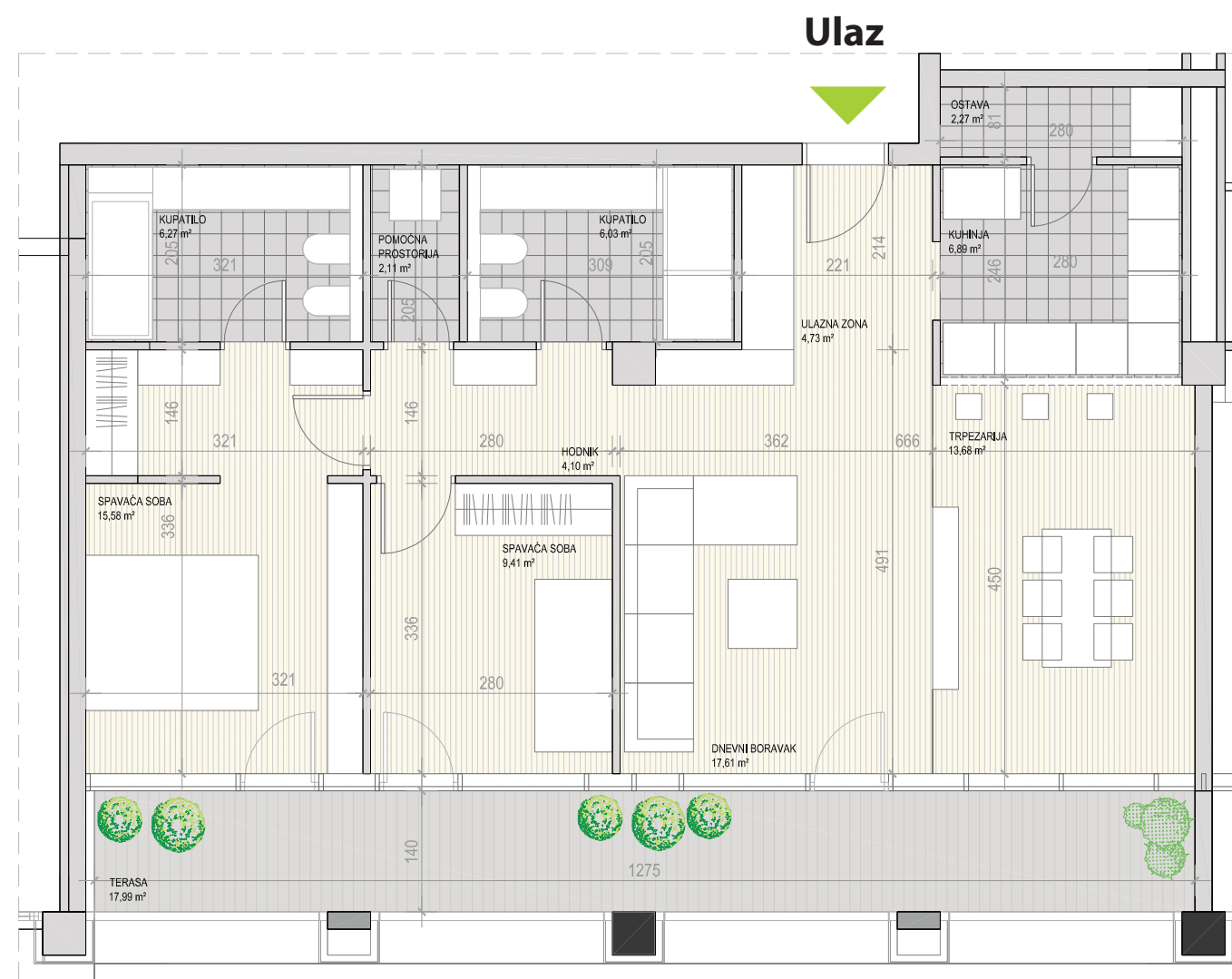
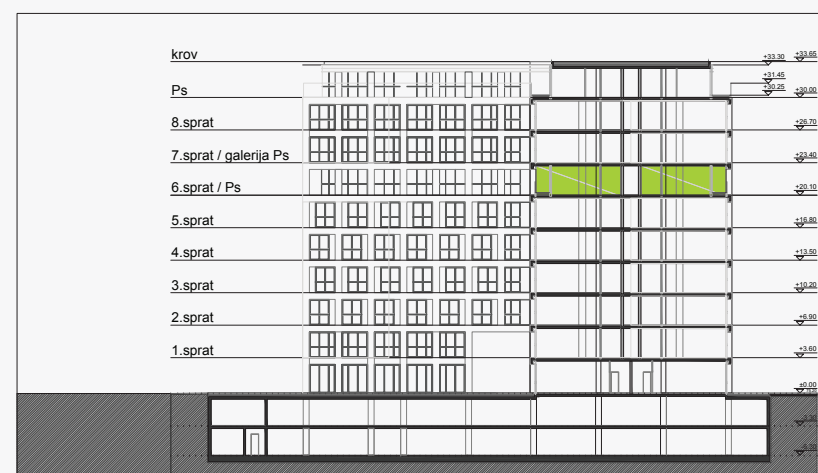




TROSOBAN STAN

106,66m²

Ulaz B - stan: 23, 24



R. br.	Prostorije	m ²
1.	Ulazni deo	4.73
2.	Dnevni boravak	17.61
3.	Spavaća soba	9.41
4.	Spavaća soba	15.58
5.	Kupatilo	6.27
6.	Pomoćna prostorija	2.11
7.	Kupatilo	6.03
8.	Hodnik	4.09
9.	Ostava	2.27
10.	Kuhinja	6.89
11.	Trpezarija	13.68
12.	Terasa	17.99
B23 UKUPNO		106.66

